

COLLAPSE IS NOT A DESTINATION

Julian Charrière, Marjolijn Dijkman, Raphaël Fischer-Dieskau, Andreas Greiner, Robert Gschwantner, Spiros Hadjidjanos, Almut Linde, Ulrike Mohr, Mazonett Quiroga, Marike Schuurman, Raul Walch

curated by Dr. Almut Hüfler & Stephan Klee

Opening hours

Wed – Sat 2 – 6 pm

and by appointment at office@frontviews.de

Free entrance

Location

frontviews at HAUNT

Kluckstraße 23 A / Yard

D - 10785 Berlin

Groundfloor



- 1** Marike Schuurman
Klein Buckow 1527-1986, Kohle, 2017
Inkjetprint of reclaimed negatives on aluminium
48 x 36 cm
- 2** Spiros Hadjidjanos
K_enn_ecot_t, 2021
Bronze Cast
52.4 x 41 x 6.4 cm
Installed with K_enn_ecot Pre-Cast, 2021
- 3** Julian Charrière
Eneman IV – Terminal Beach, 2016
Large-format black-and-white-photograph, double-exposed through thermonuclear strata, archival pigment print on Hahnemüle Photo Rag, mounted on aluminium Dibond, Red Palmira veneered frame, Mirogard anti-reflective glass
120,2 x 150,2 cm
Installation with Ohne Titel, coconut in lead sarcophagus, 2016,
20 x 14 x 14 cm
- 4** Almut Linde
DIRTY MINIMAL #88.2 - CAVE, 2014
Light-jet Print
120 x 180 cm

- 5** Almut Linde
DIRTY MINIMAL #88.1 MINIMALIZED DIRT SQUARE/ GORLEBEN, 2014
Salt
200 x 200 cm
- 6** Almut Linde
DIRTY MINIMAL #88.2 - CAVE, 2014
Light-jet Print
120 x 180 cm
- 7** Marjolijn Dijkman
Depth of Discharge, 2021
4K, 2 or 4-channel sound composition
27:40 min
- 8** Marjolijn Dijkman
Earthing Discharge (#1), 2019
Framed C-print on paper
110 x 90 cm
- 9** Marjolijn Dijkman
Earthing Discharge (#2), 2019
Framed C-print on paper
110 x 90 cm
- 10** Marjolijn Dijkman
Earthing Discharge (#3), 2019
Framed C-print on paper
110 x 90 cm

COLLAPSE IS NOT A DESTINATION

Julian Charrière, Marjolijn Dijkman, Raphaël Fischer-Dieskau, Andreas Greiner, Robert Gschwantner, Spiros Hadjidjanos, Almut Linde, Ulrike Mohr, Mazonett Quiroga, Marike Schuurman, Raul Walch

curated by Dr. Almut Hüfler & Stephan Klee

Opening hours

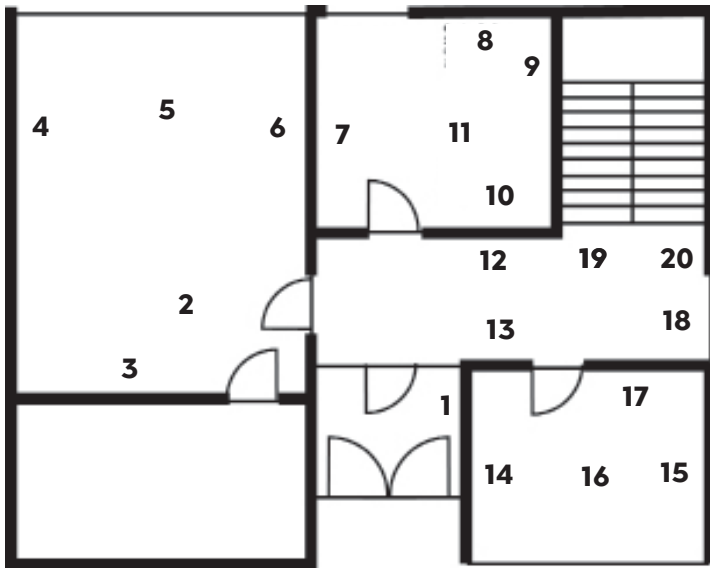
Wed – Sat 2 – 6 pm

and by appointment at office@frontviews.de
Free entrance

Location

frontviews at HAUNT
Kluckstraße 23 A / Yard
D - 10785 Berlin

Groundfloor



11 Marjolijn Dijkman
Cloud to Ground, 2021
Resin, fulgurite, aluminium board
30 x 30 x 20 cm

12 Marike Schuurman
Partwitzer See 3-2 PH 5,5, Toxic 2022
Inkjetprint on aluminium,
framed in plexiglass box
147 x 120 cm

13 Marike Schuurman
Merzdorf 1400-1979, Kohle, 2017
Inkjetprint of reclaimed negatives on aluminium
48 x 36 cm

14 Marike Schuurman
Bernstein See 1-2 PH, 6,5, Toxic 2022
Inkjetprint on aluminium,
framed in plexiglass box
104 x 85 cm

15 Marike Schuurman
Bergheider See 3-PH3, Toxic 2022
Inkjetprint on aluminium,
framed in plexiglass box
104 x 85 cm

16 Robert Gschwantner
ERIKA0065, 2000
PVC tubes, oil: TOTAL ALTIGRADE GP & ELF 2T
50x85cm

17 Robert Gschwantner
North Beach, 2021
Collection II, PVC tubes, seawater, sand, plastic
particles, folded
95x70cm

18 Robert Gschwantner
North Beach Collection V, 2023
PVC tubes, seawater, sand, plastic particles
220 x 100 cm

19 Raul Walch
No One To Follow, 2020
Video, full HD, Loop 11:42 min
Edition of 2 courtesy the artist and Galerie
EIGEN + ART Leipzig/Berlin

20 Marike Schuurman
Presenchen - 1986, Kohle, 2017
Inkjetprint of reclaimed negatives on aluminium
48 x 36 cm

COLLAPSE IS NOT A DESTINATION

Julian Charrière, Marjolijn Dijkman, Raphaël Fischer-Dieskau, Andreas Greiner, Robert Gschwantner, Spiros Hadjidjanos, Almut Linde, Ulrike Mohr, Mazenett Quiroga, Marike Schuurman, Raul Walch

curated by Dr. Almut Hüfler & Stephan Klee

Opening hours

Wed – Sat 2 – 6 pm

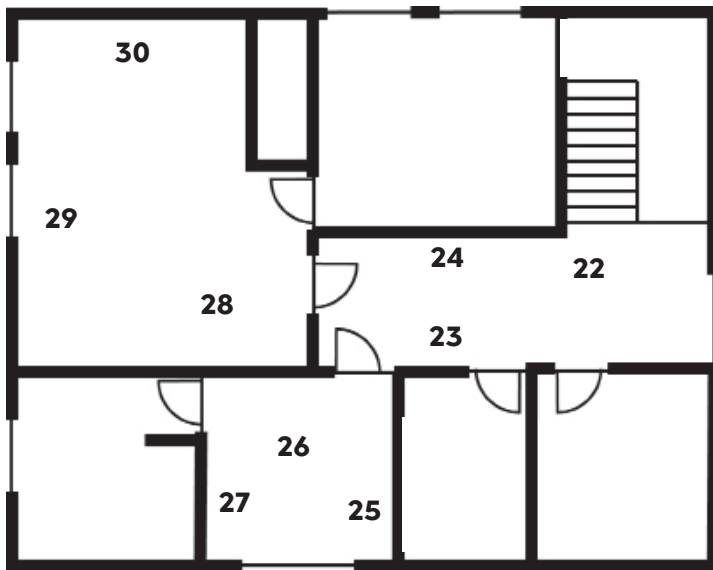
and by appointment at office@frontviews.de
Free entrance

Location

frontviews at HAUNT
Kluckstraße 23 A / Yard
D - 10785 Berlin

First floor

21



- 25 Raphaël Fischer Dieskau
Solosuite for Extinct birds No.1, 2023
Alderwood, speaker, cable, electronics
15 x 16 x 9 cm
- 26 Ulrike Mohr
Sheltered (Nest), 2024
Ceramic and carbonized wood
85 x 30 x 110 cm
Installation with distilled smoke scent
- 27 Ulrike Mohr
Oiseau brûlé, 2024
Partially charred wood
30 x 9 x 36 cm
- 28 Ulrike Mohr
Sheltered (Pile), 2023
Ceramic and carbonized wood
75 x 20 x 100 cm
- 29 Spiros Hadjidjanos
Unfolded, 2019
Pine (Charred)
Part I: 174 x 24,5 x 15 cm - Part II: 183 x 39,5 x 0,5 cm
- 30 Andreas Greiner
Abschied (Harz) 2020
Vom Walde, 2020
Video created with an AI trained on thousands of forest images, image data set captured in the forest of Goslar, programmed by Daan Lockhorst
Video, looped. Sound concept and design by Louis McGuire, synthesized from Mendelssohn Bartholdy's choir piece "Abschied vom Walde / Farewell to the Forest", video tracking algorithm, programmed by Daan Lockhorst, looped.
Courtesy of DITTRICH&SCHLECHTRIEM Länge

- 21 Raphaël Fischer Dieskau
Concerto for extinct birds, 2024
Walnut, spruce, speaker, cable, electronics
210 x 210 x 25 cm
- 22 Mazenett Quiroga
Gente Serpiente (Snake people), 2019-2023
2 Bicycle tires and Acrylics
2 Branches, bronze
2 x 60 cm, 2 x 25 x 14 cm
- 23 Mazenett Quiroga
Gente Serpiente (Snake people), 2019-2023
2 Bicycle tires and Acrylics
Branch, bronze
2 x 60 cm, 25 x 14 cm
- 24 Mazenett Quiroga
Roots of the Sky, 2024
9 digital prints on cotton paper Hahnemühle,
covered with gold leaf 24K
59 x 47 cm each