

THE ENVIABLE ISLE

LEON MANOLOUDAKIS

a solo show at HAUNT Studio

frontviews

Opening hours

20 July – 24 Aug 2024, Wed-Sat 2 - 6 pm and
by appointment at office@frontviews.de
Free admission

Location

frontviews at HAUNT
Kluckstraße 23 A / Yard
D - 10785 Berlin

<http://frontviews.de>

IG #frontviews_

<https://vimeo.com/frontviews>

EN

THE ENVIABLE ISLE While various media and their hybrids are expanding in our reality, it is a priori the interplay of two materials that has characterized the artistic practice of Leon Manoloudakis for years and is concretized in a growing complex of works. On the one hand, dark graphite, a crystalline structure made of natural carbon. On the other, light-colored paper, a breathing cellulose structure that binds oxygen and hydrogen as well as carbon. In classical drawing, the combination of both components can be traced back through centuries of cultural history; however, the artist steps out of this tradition by capturing graphite and paper as primary elements in their respective properties, examining them, and innovatively interlocking them. Through this basic research, the usual limits of the medium are greatly exhausted and expanded.

In his current exhibition in the HAUNT's new Kabinett, Manoloudakis draws inspiration from Herman Melville's eponymous poem The Envidable Isles and presents a group of small works that combine different creative approaches. Melville's poem and Manoloudakis' drawings find a common level in their emphasis on transformation and process.

Programme

Vernissage

Fri 19 July 6 – 9 pm

Exhibition Tours

Sat 20 July 3 pm

Sat 27 July 3 pm

Finissage

Sat 24 Aug 5 – 8 pm

supported by:



THE ENVIABLE ISLE

LEON MANOLOUDAKIS

a solo show at HAUNT Studio

frontviews

Opening hours

20 July – 24 Aug 2024, Wed-Sat 2 - 6 pm and
by appointment at office@frontviews.de
Free admission

Location

frontviews at HAUNT
Kluckstraße 23 A / Yard
D - 10785 Berlin

<http://frontviews.de>

IG #frontviews_

<https://vimeo.com/frontviews>

EN

The Envable Isles _From 'Rammon.'_

Through storms you reach them and from
storms are free.

Afar descried, the foremost drear in hue,
But, nearer, green; and, on the marge, the sea
Makes thunder low and mist of rainbowed
dew.

But, inland, where the sleep that folds the hills
A dreamier sleep, the trance of God, instills—
On uplands hazed, in wandering airs
aswoon,
Slow-swaying palms salute love's cypress tree
A down in vale where pebbly runlets croon
A song to lull all sorrow and all glee.

Sweet-fern and moss in many a glade are here.
Where, strewn in flocks, what cheek-flushed
myriads lie
Dimpling in dream—unconscious slumberers
mere,
While billows endless round the beaches die.

supported by:



THE ENVIABLE ISLE

LEON MANOLOUDAKIS

Frontviews

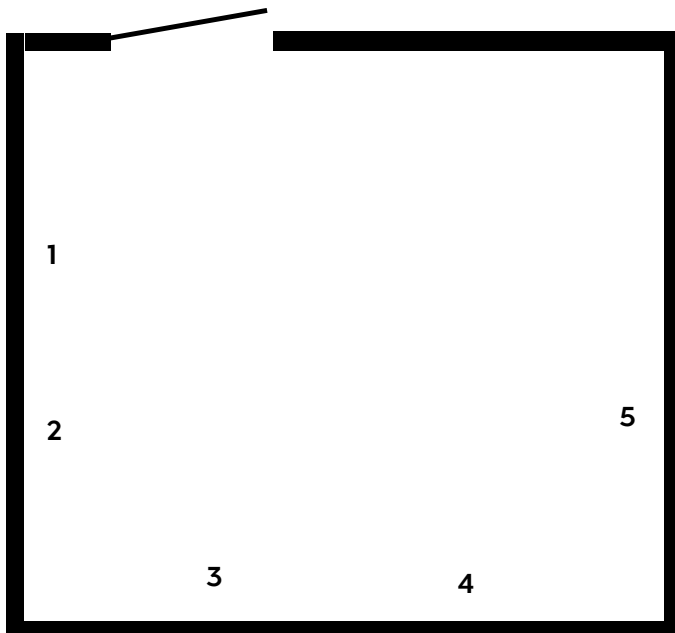
Opening hours

Wed - Sat 2-6 pm and by appointment at
office@frontviews.de
Free entrance

Location

frontviews at HAUNT
Kluckstraße 23 A / Yard
D - 10785 Berlin
<http://frontviews.de>
IG #frontviews_
<https://vimeo.com/frontviews>

a solo show at HAUNT Studio



4 o.T. (untitled),
graphite on paper, 2023
26,5x18 cm

5 Meerstück (Seascape),
graphite on paper, collage,
2024
23x32 cm

1 Asche (Ashes)
graphite on paper, 2020
20x26x2 cm

2 Zeitalter des Chthuluzäns
(Dawn of the chthulucene)
graphite on paper, 2024
16x23 cm

3 Wald (Forest),
graphite on paper, 2022
16x20,5 cm